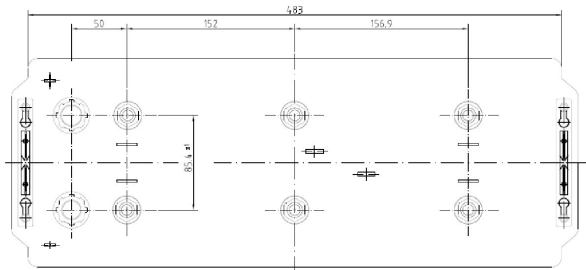
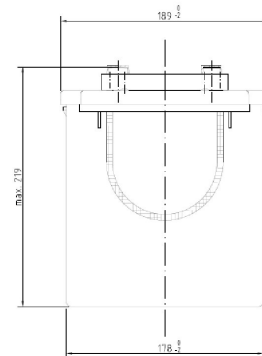
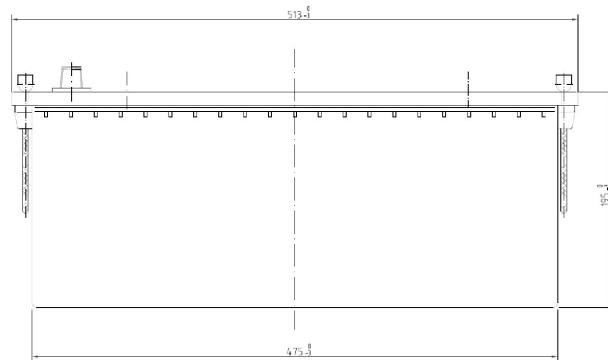


Central Article Code: D04076G09-A  
 Local Code: ES1350

Created: 05/09/2005  
 Modified: 20/03/2019



Final Outlook	D0409-A
Approval date	01/11/2010

## PERFORMANCES

Voltage (V):	12 V	
C20 (Ah):	120.0	20 h
Cranking (A):	0	EN
Charge:	CHARGED	
Technology:	GEL	
Grid:	Ca/Ca	

## CONTAINER

Type:	D04	BLACK
Hold Down:	B0	
H.D. Adapter:	No	

## COVER

Type:	Flat/Screw	BLACK
Polarity:	ETN 3	
Terminals:	EN taper post	
Terminal Adapter:	No	
SOCI:	No	
Ventilation:	Independent	
Filter:	No	
Lateral Plug:	No	

## STD. DIMENSIONS

Length (mm ± 2):	513
Width (mm ± 2):	189
Height (mm ± 2):	223
Total Weight (kg ± 5%):	40.00

## PLUGS

Type:	6 x M18 Valve	GREY MEDIUM
-------	---------------	-------------

## HANDLES

Type:	2 x Rope (Rigid holde	BLACK
-------	-----------------------	-------

## OTHERS

Degassing Tube:	No
Gel	

All figures show nominal values. Tolerances are according to EN50342 and applicable European Regulations.